

CASAMBI Bluetooth Dimmable Constant Current Series FLS-42-1050 Blue LA-CSB

■ Features

- Bluetooth dimmable constant current LED driver with integrated wireless CASAMBI module.
- Max output current adjustable by DIP-Switch.
- SELV, Class II protection against electric shock.
- Independent type optional by an additional strain relief.
- Input Voltage 220-240VAC
- APFC, PF ≥ 0.9
- Efficiency $\geq 86\%$
- Protections: short circuit/over load/over voltage
- 5-Year warranty



■ Applications

- LED panel
- LED spot light
- LED down light
- COB light

CASAMBI

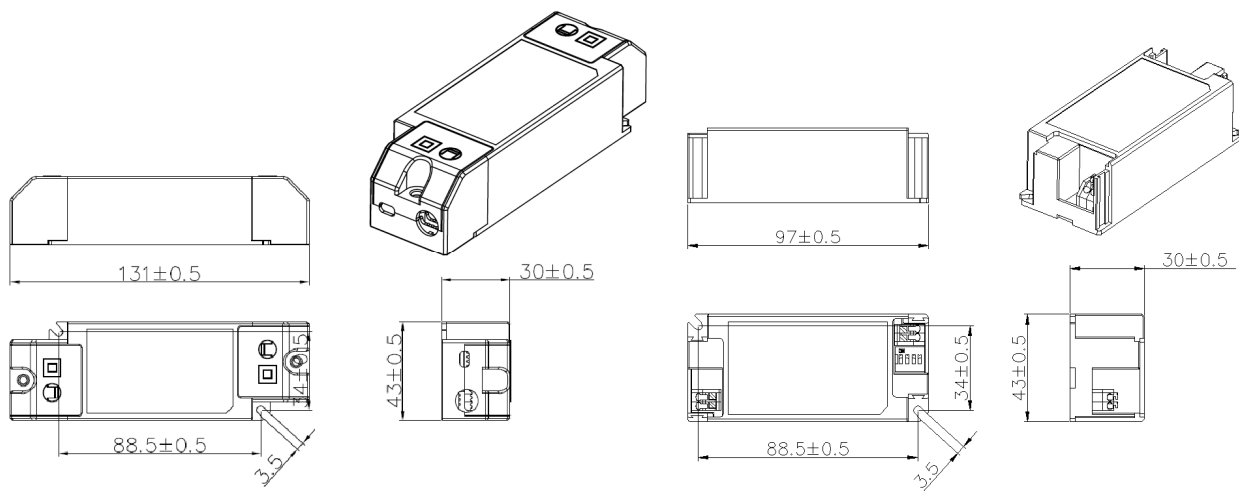
■ Approvals

CE SELV

■ Description

FLS-42-1050 Blue LA-CSB is a 42W constant current Bluetooth dimmable LED driver, integrated wireless CASAMBI module, output current can be selected by DIP-Switch from 700 to 1050mA by 8 steps. Has very wide load forward voltage range 9 to 52 Vdc. Thanks to the mini size (dimension: 97 x 43 x 30mm), it is easy to be integrated into down light or similar luminaires, the strain relief is optional for independent application. To ensure trouble-free operation, protection is provided against output short circuit and over Load.

■ Mechanical Specifications



CASAMBI Bluetooth Dimmable Constant Current Series

FLS-42-1050 Blue LA-CSB

■ Specification

Input	Rated input voltage	220-240 VAC
	Range of input voltage	176-264 VAC
	Frequency(Hz)	0/50/60 Hz
	DC input voltage range	176-280 VDC
	Power Factor	0.95 @Full Load, 220-240 V/50Hz
	Input Current max	0.22 A typ. @Full Load, 230V AC
	Start-up time	< 0.5S
	Unload Power Consumption	≤ 0.5W
	Inrush Current	30A Max. T50% < 200 us
	Devices number for C16 MCB	36 pcs
	Leakage Current	< 0.7mA
	Maximum voltage	300V for 1 hr, no safety issue
	Total Harmonics Distortion	<10% @Full Load, 230V/50Hz
Output	Constant Current Max. *Note.3	700-1050mA, 8 steps by 50mA
	AoC setting	Yes, DIP-Switch
	Output channels	1
	U-out	60 VDC
	Voltage Range(VDC)	9-52VDC
	Rated load	42W Max.
	Current Accuracy	±5%
	Hold-up Time	1s max. @Full Load
	Ripple& Noise *Note.2	< ±3% (for 100-120 Hz low frequency)
	Efficiency	≥ 86% @Full Load, 220-240 VAC
Dimming	Dimming mode	Bluetooth (CASAMBI module)
	Recommend Remote controller	n.a.
	Dimming current range	0% (Dim to off), 1% - 100%
	Dimming color temp. range	n.a.
Protection	Over Load Protection	Yes, Auto Resume
	Over Voltage Protection	Yes, Auto Resume
	Short circuit Protection	Yes, Auto Resume
	Overtemperature Protection	Yes, Auto Resume
Environment	Environmental Rating	Indoor use
	IP Rating	IP 20
	Operating Temperature	-25°C...+45°C
	tc	85°C
	Storage Temperature	-40°C...+85°C
	Humidity	5%-85% RH (No condensing)
	Life time	> 50,000h @tc, failure rate of 10%
	Mains switching cycles	> 100,000 cycles
Mechanical	Dimension (LXWXH)	Built-in: 97 X 43 X 30 mm; Independent: 131 X 43 X 30 mm
	Weight	Built-in: 180 g; Independent: 199g
Safety , EMC and standards	SELV	Yes
	Withstand voltage	3750V/5mA/1min
	Isolation resistance	≥ 4MΩ@500VDC
	Safety standards	EN 61347-1; EN 61347-2-13;
	RF standard	EN 300328; EN 301489-1; EN301489-17
	Performance	EN 62384
	EMI	EN55015; EN61000-3-2 Class C; EN61000-3-3
	EMS	EN 61547; EN 61000-4-2 (Performance Criteria B); EN 61000-4-5 (1500V, Performance Criteria C)

CASAMBI Bluetooth Dimmable Constant Current Series

FLS-42-1050 Blue LA-CSB

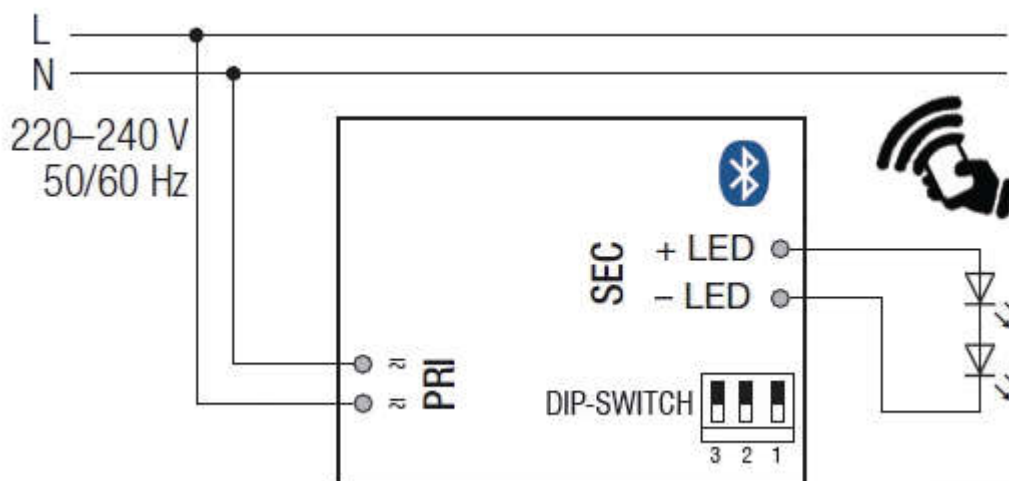
Note:

1. All parameters are measured at 240VAC input, full load and 25°C ambient temperature if without special comment.
2. Ripple current is measured at 20MHz of bandwidth, and a 0.1uF & a 47 uF capacitors are connected in parallel through a 300mm twisted.
3. Not fit for ceiling corner installation application.

■ Output current selecting table

1	2	3	I _o	V _o	P _{max}
--	--	--	700 mA	9-52VDC	36.4W
ON	--	--	750 mA	9-52VDC	39W
--	ON	--	800 mA	9-52VDC	41.6W
ON	ON	--	850 mA	9-49VDC	41.7W
--	--	ON	900 mA	9-47VDC	42.3W
ON	--	ON	950 mA	9-44VDC	41.8W
--	ON	ON	1000 mA	9-42VDC	42W
ON	ON	ON	1050 mA	9-40VDC	42W

■ Connection diagram



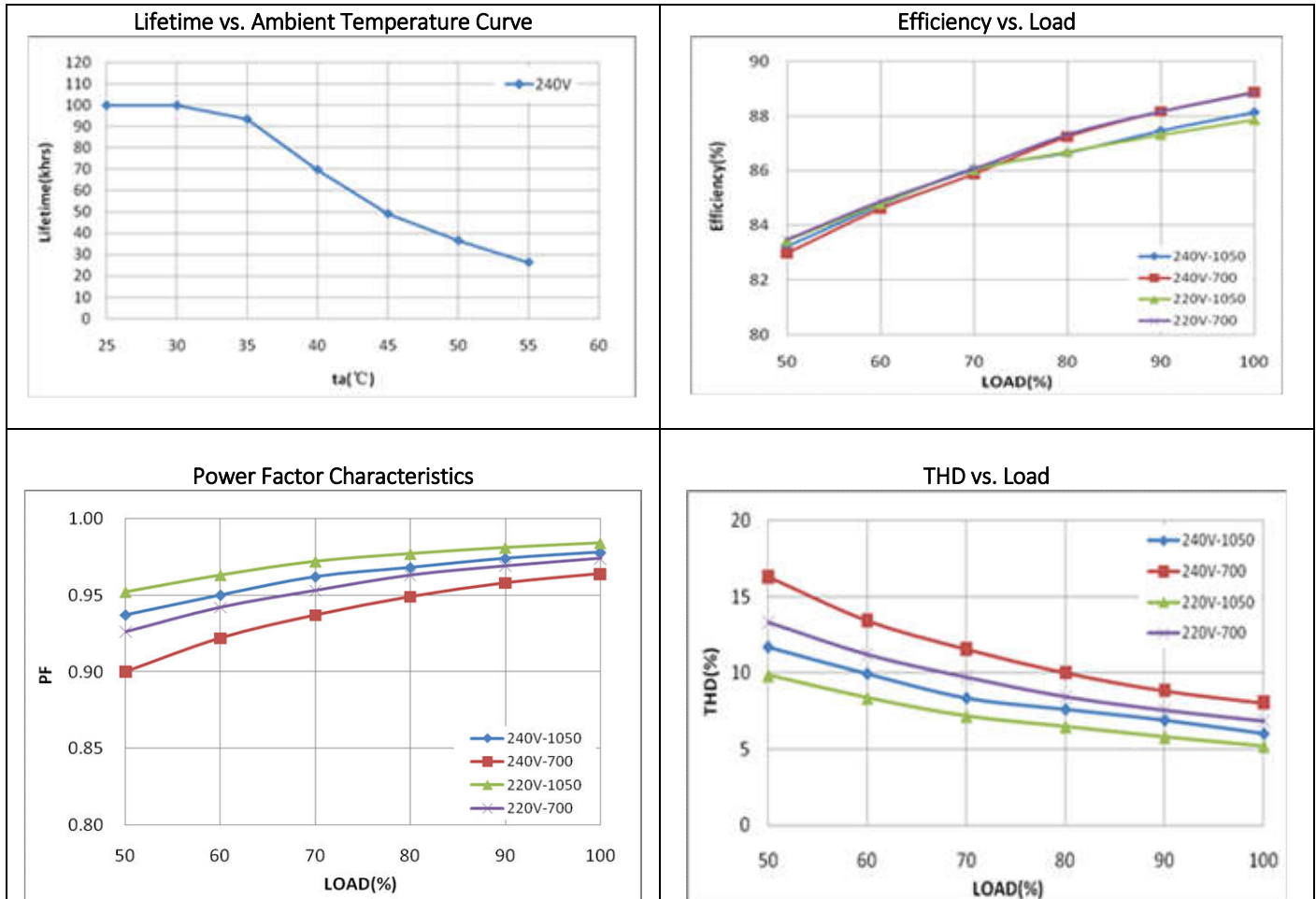
Notes:

- Wire preparation: 0.5–1.5 mm².
- Hot plug-in or secondary switching of LEDs is not permitted and may cause a very high current to the LEDs.
- CASAMBI APP can be downloaded from App store and Google play

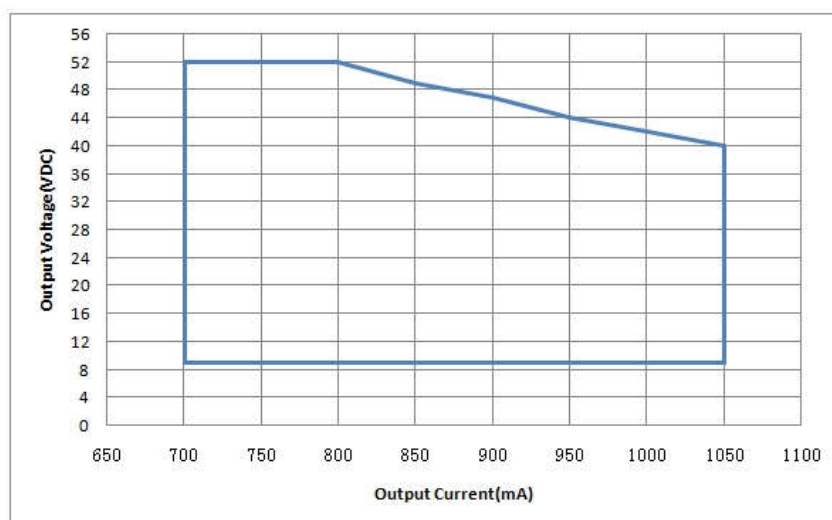
CASAMBI Bluetooth Dimmable Constant Current Series

FLS-42-1050 Blue LA-CSB

Curves



Operating window



Disclaimer

Subject to change without notice. Errors and omission excepted. Always make sure to use the most recent release.