



Neo Lighter - NA.LT.4_A01
rev. 1.0_01/01/2019

General description

Bluetooth controllable, keypad for operation control with feedback led. The buttons can control a scene or an animation of the user's choice or simply one luminaire, one luminaire group or all lamps together if so desired if used with PLH Aria dimmers or any lighting fixture powered by Casambi or a PLH Aria Jellyfish output interface.

To be configured with Casambi app available for iOS (iPhone 4S or later, iPad 3 or later, iPod Touch 5th gen or later) and Android devices (Android 4.4 KitKat or later devices produced after 2013 with full Bluetooth 4.0 support).

Technical specifications

Programmable push buttons	3 + 1
Type of inputs	Tact, rotative push buttons (30° , -30°) and Shake
Operating life	15.000 cycles
Feedback	Led blue on board
Battery type	3V CR2032 lithium coin cell
Lyfetime	10.000 click
Maximum output radio transceiver power:	2,4...2,483 Ghz +4 dBm
Range (depending on the surroundings)	up to 10 m
Contains FCC ID:	2ALA3-CBM002A
Contains IC	22496-CBM002A
Dimensions:	ø 29 mm x 49,5 mm (1,14 x 19,5 inches)
Case	Polycarbonate body and top in aluminium
Weight:	50 g
Degree of protection:	IP44
Ambient temperature, ta:	- 20 ... + 45 °C
Max. case temperature, tc:	+ 65 °C
Max. relative humidity:	0...80%, non-cond.
Mark and regulations	CE

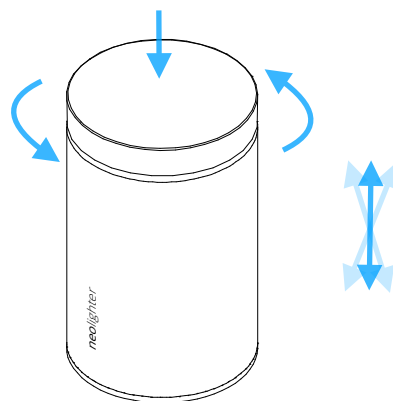
Casambi Profile

3663	Neo 2 P : Neo Encoder 2 push buttons CW
8452	Neo 2 P Inv: Neo Encoder 2 push buttons CCW
3660	Neo 4 P: Neo Encoder 4 push buttons

How to use it

Check the instructions below for the configuration.

PLH Neo Lighter is provided with 4 functions: click, rotate 30° CW, rotate 30° CCW and shake (strong)

**How to change the battery**

Upside down the Neo Lighter and open the bottom rubber cover. Take out gently the battery holder.

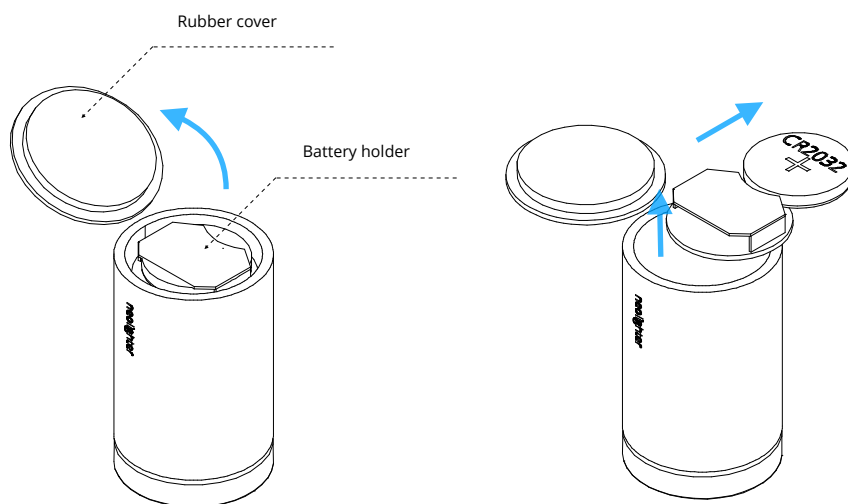
Release the old battery sliding it, and change with the new one CR2032.

Respect the + symbol on the top.

Click the push button and check the functionality and the blue led on.

Reinsert the battery holder in the housing and close again the rubber cover and be sure it's all well fixed on the bottom.

The PLH Neo Lighter is supplied with the 8452 firmware preinstalled



Warranty

We reserve the right to make technical and formal changes to the product in the interest of technical progress. Our products are under guarantee within the scope of the statutory provisions.

If you have a warranty claim, please contact PLH by e@mail (support@plhitalia.com) or the Local Reseller.



This product should not be disposed of with household waste.

Please recycle the products where facilities

for electronic waste exist. Check with your local authorities for recycling advice.

1. Download the app

Download the free Casambi App directly from the AppStore or the Google Play

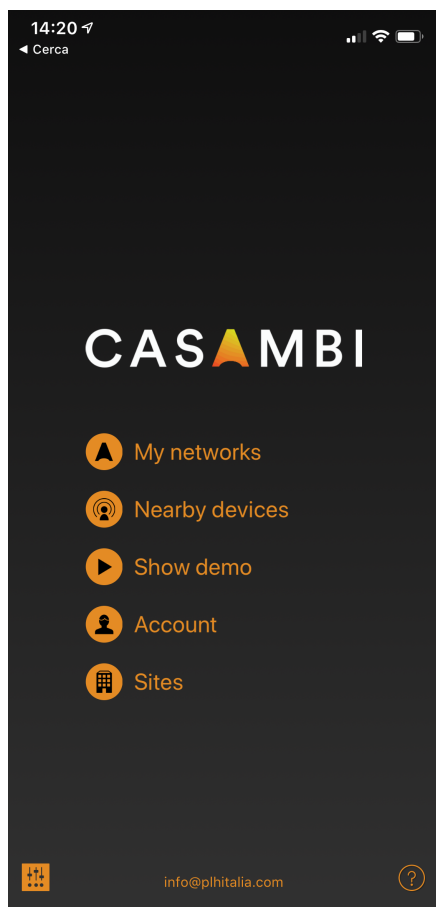


For all the functionality of the Casambi App download the Short User Guide from the Casambi website
<https://casambi.com/static/datasheets/Short-user-guide.pdf>

2. Open the App

Before you open the app be carefull about this points:

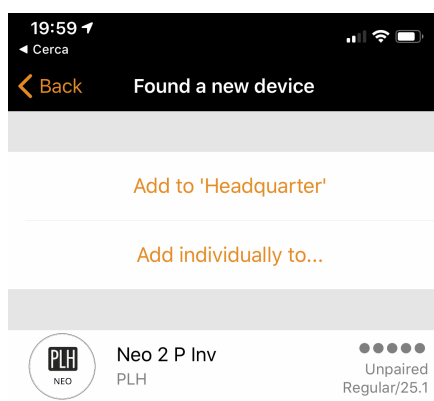
- the Bluetooth need to be **ON** on your smartphone or tablet
- have done all the updates of the operating system;
- have installed and configured a Casambi device or a PLH Dimmer or PLH Jellyfish
- have created a 'Network'



3. Add the device

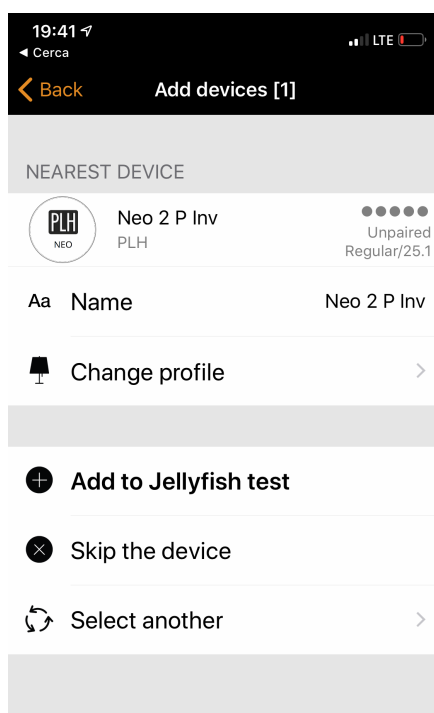
To add the Neo Lighter on your network you need to have installed a Casambi enabled lighting fixture, a PLH Dimmer or a PLH Jellyfish.
 Refer to the specific manual for the installation of those devices.

After you open the Casambi App on your Smartphone, **take pressed** the main button of the Neo Lighter and a window 'Found a new device' will appear.



Then click on **Add individually to...**, change the Name of your Neo Lighter, and add to your new network.

Release the button only at the end of the process.



Take in mind that by default the profile is provided with the Neo 2 P Inv.

But are available 3 different profile:

- **Neo 2 P**
Will be possible to set up only the click and the shake to different functions or scenario: rotation clockwise will dimm UP and counter clockwise will dimm DOWN the main scenario or light associated to the main push button
- **Neo 2 P Inv**
Will be possible to set up only the click and the shake to different functions or scenario: rotation clockwise will dimm DOWN and counter clockwise will dimm UP the main scenario or light associated to the main push button
- **Neo 4 P**
Will be possible to set up 4 different functions or scenario for every command, main push button, rotate clockwise and counter clockwise and shake

If you want to change it, select the new profile from the '**Change profile**' option. Will be possible to change it again later following the steps at point 5

Don't forget to always press the main button or the Neo Lighter will fall in sleep and break the communication.

4. Assign input functionality

To assign and change the preferences of the Neo Lighter go on **More / Switches** and select your Neo Lighter

Depending to the profile you choose you will have 2 or 4 presets.

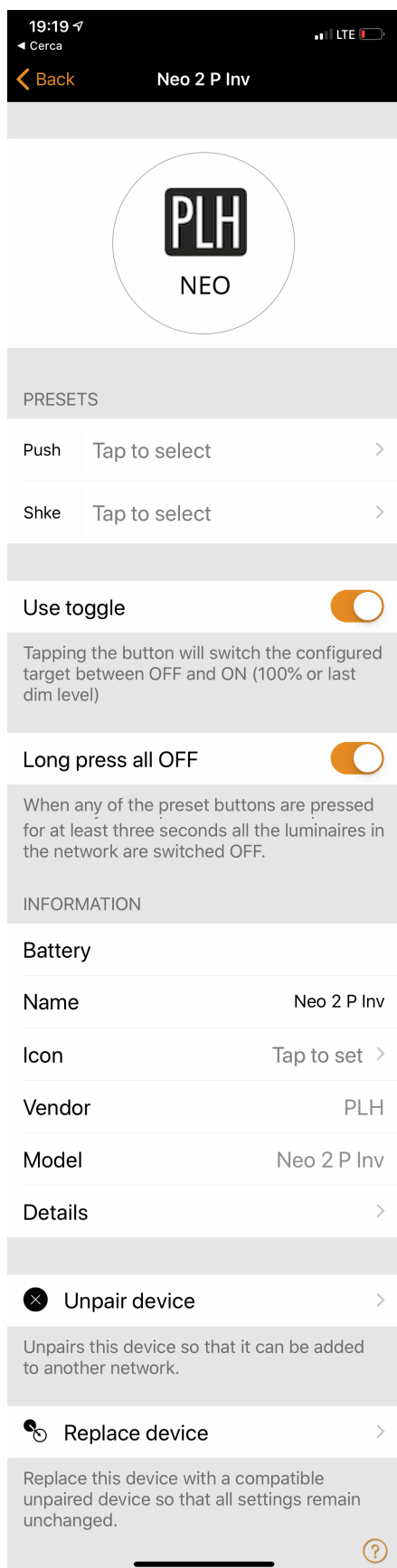
From the beginning all the input will be 'Not in use'.

Tap to select to change the functionality.

You can control any Casambi devices or scenarios.

To control the Jellyfish output click on 'Control an element' and select then the right output
 To control a PLH Dimmer click on 'Control a Luminaire'.

Refer to the Casambi App Manual for any further study.



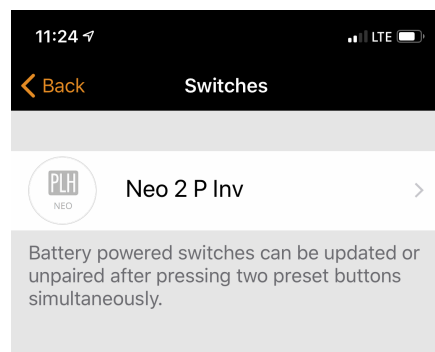
5. Change the profile of a Neo Lighter

When the Neo Lighter is added, it will be visible from the menu More / Switches.

Remember that after 6 second the Neo Lighter fall in sleep. During the process of the upgrade of the Profile always click the main push button. Release only at the end of the process.

To change the profile of a Neo Lighter go to the Menù More / Switches.

The Neo 2 P Inv, or the other profile changed, will be greyed.



Click on it and scroll bottom the menù.

Then to show the **Unpair device** you need to:

- click the main push button and shake strongly the Neo Lighter (for the profile Neo 2 P Inv and Neo 2 P)
- click the main push button and rotate at the same time the same button (for the profile Neo 4 P)

After the device is unpaired click again the main push button, and continue press it, and go on the **More.../Nearby** menu'.

Click on the Neo Lighter icon.

When you click on it the app will ask to 'Change profile' too.

Change profile give you the chance to change the firmware, then the settings of the push buttons. Check the list on first page then select the desired profile

Add again the Neo Lighter to your Network.

Don't forget. Every time you perform this operation you will discards all the setups.

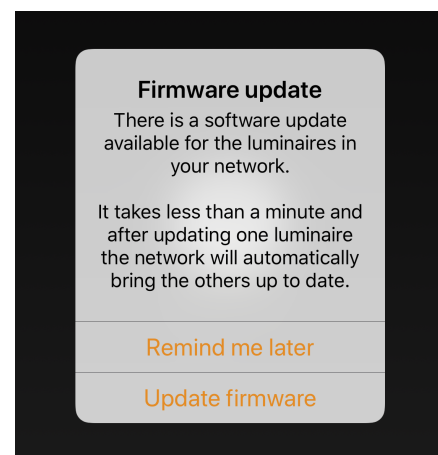
Only when you end the process release the push button and continue from the step 5

6. Update the firmware

Time to time the firmware update window will appear for some maintenance stuff.

Then perform the update clicking on **Start update**.

Don't forget to take pressed the main push button till the update is not ended.



7. Troubleshooting

- 1) The Neo Lighter is a battery device. If not function check the blue light turn on when you click the main push button. If not, change the battery following the instructions.
- 2) The Neo Lighter use the bluetooth signal, for communicate between the devices. Refer to the Casambi website to discuss all aspects related to this technology.
- 3) You can control devices in a range up to 10m but it strongly depends by the surroundings. If the 'receiver' device like a Casambi Dimmer, is inside of a metal box this range can reduce significatively.



www.plhitalia.com



info@plhitalia.com



plhitalia
#plhitalia



@plhitalia



PLH Italia



Devices with soul.